

# I-SFT 100i.2b

G23916-B0065-H156

10.5" VGA open frame display, integrated inverter



industrial solutions  
flatpanel technology

Industrial Displays for Extreme Conditions

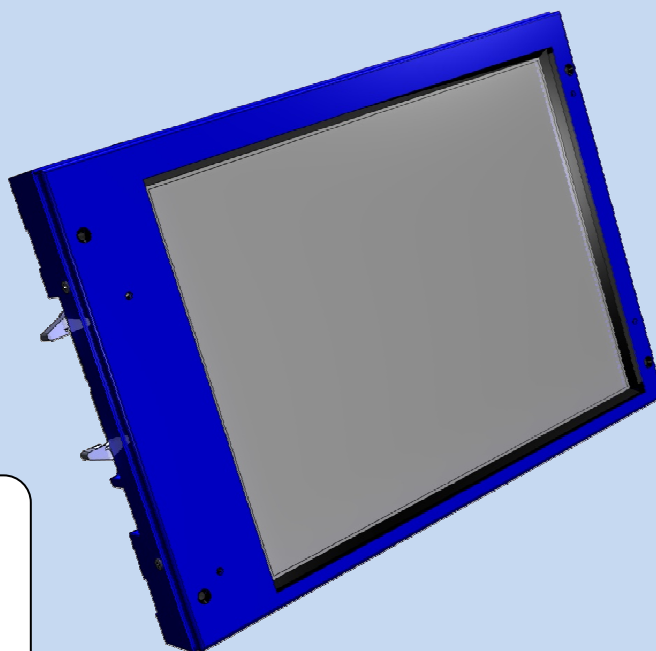
## 10.5" VGA high-bright

ultra-wide temperature range

rugged system

daylight readable

long lifetime



i-sft plus

MTTH 50,000 h @ full temp  
integrated inverter, fanless  
shock / vibration resistant  
cold start capable



### Key Features (see back for details) This is not an official specification.

Luminance	1000 cd/m <sup>2</sup>
Dimming	1 : 1000
Contrast	>450 : 1
Viewing angle	55°/30°/55°/55° (typ)
Temperature, operating	-25°C to +85°C
Temperature, storage	-35°C to +85°C
Cold start	-25°C
Shock	50 g @ 11 ms
Vibration	3 g @ 5-2000 Hz
MTTH	50 000 h over the full temperature range
Power incl. inverter	19W (typ.)

customized versions on request

# I-SFT 100i.2b

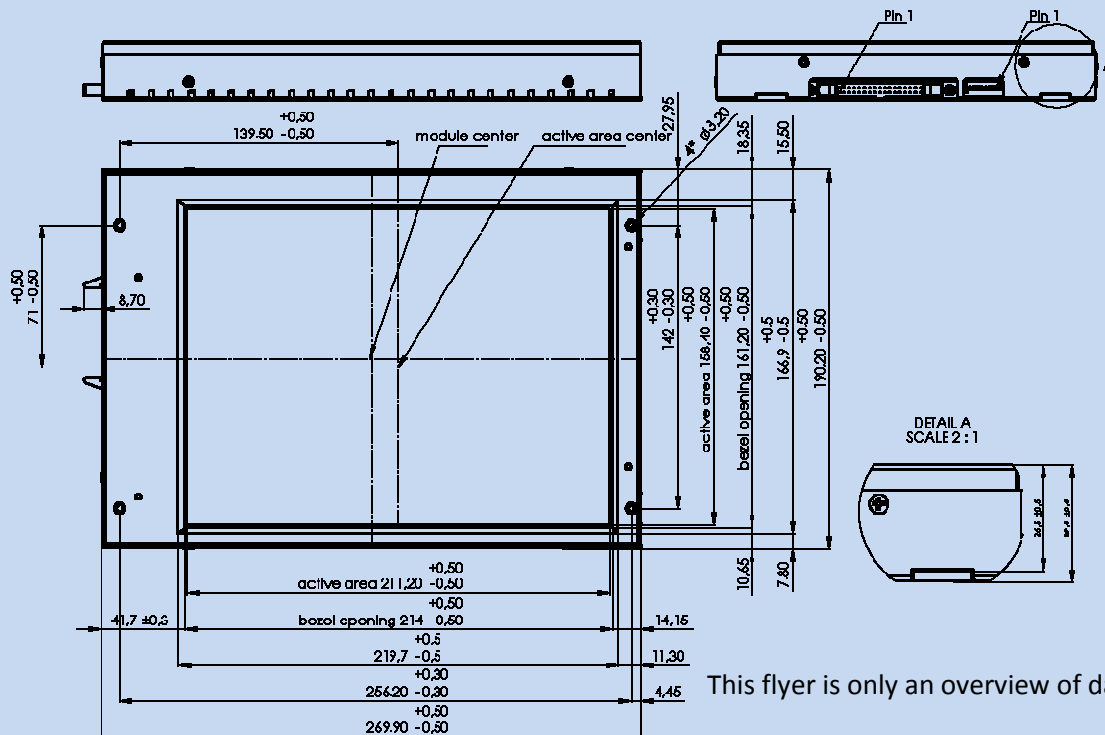
G23916-B0065-H156

10.5" VGA open frame display, integrated inverter

dimensions			
screen diagonal	resolution	size (WxHxD, mm)	weight
10.5"	VGA	269.9 x 190.2 x 29.55	1450 g
interfaces			
input signal	LCD supply voltage	inverter supply voltage	power consumption
TTL	3.3 V DC or 5V DC	12 V DC	19 W (typ.)

optical			
colors	k (1024)	256	
luminance	cd/m <sup>2</sup>	1000	
contrast		>450:1	typ.
viewing angle T/D	CR5 / °	55 / 30	
viewing angle R/L	CR5 / °	55 / 55	
color gamut	% of NTSC % of PAL	>35 >50	at 20°C
response time	ms	60 max.	rising+falling
dimming		1:1000	
MTTH	hours	> 50 000	over full temp range

environmental			
temperature (operating)	°C	-25 to +85	
temperature (storage)	°C	-35 to +85	
cold start	°C	-25	without reducing life time
shock (operating)	g; ms	100; 11	
vibration (operating)	g; Hz	3; 5-2000 Hz	



This flyer is only an overview of data.

All final data should be taken from the full specifications.

customized versions on request