

I-SFT 100i.10X-XT

G23916-B0065-H070

10.4" XGA open frame display, integrated inverter



industrial solutions
flatpanel technology

Industrial Displays for Extreme Conditions

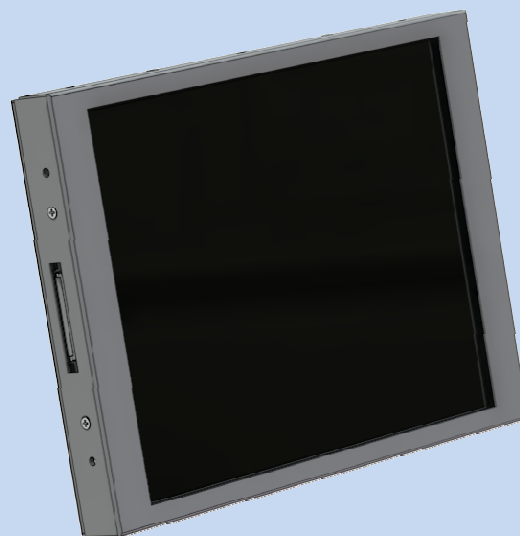
10.4" XGA extreme performance

ultra-wide temperature range

rugged system

sunlight readable

energy efficient



i-sft plus

MTTH 50,000 h @ full temp
integrated inverter, fanless
shock / vibration resistant
cold start capable



Key Features (see back for details) This is not an official specification.

Luminance	1000 cd/m ²
Dimming	1 : 1000
Contrast	900 : 1 (typ.)
Viewing angle	80°/80°/80°/80°
Temperature, operating	-31°C to +85°C
Temperature, storage	-46°C to +85°C
Cold start	-31°C
Shock	50 g @ 11 ms
Vibration	3.5 g @ 10-2000 Hz
MTTH	50 000 h over the full temperature range
Power incl. inverter	<20Watt (typ.)

customized versions on request

I-SFT 100i.10X-XT

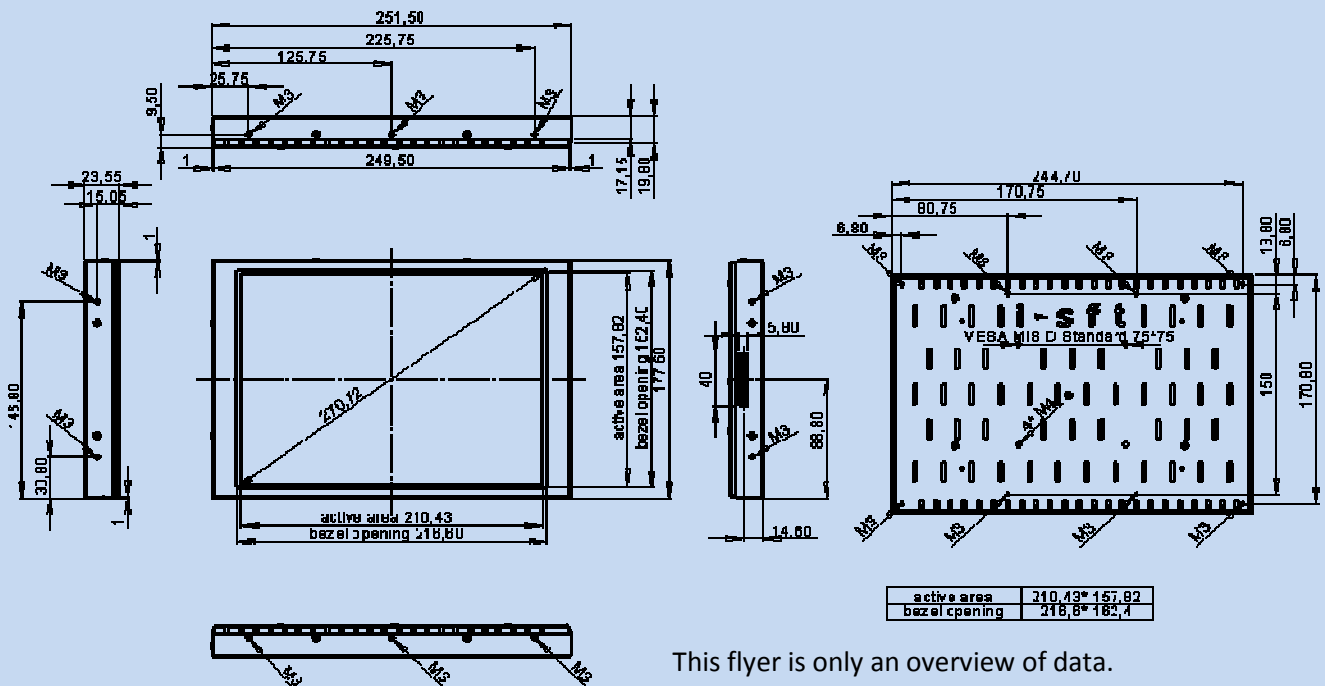
G23916-B0065-H070

10.4" XGA open frame display, integrated inverter

dimensions			
screen diagonal	resolution	size (WxHxD, mm)	weight
10.4"	XGA	251.5 x 177.6 x 23.55	1300 g
interfaces			
input signal	LCD supply voltage	inverter supply voltage	power consumption
1ch LVDS	3.3 V DC	12 V DC	<20 W (typ.)

optical			
colors	k (1024)	256	
luminance	cd/m ²	1000	
contrast		900:1	typ.
viewing angle T/D	CR10 / °	> 80 / 80	
viewing angle R/L	CR10 / °	> 80 / 80	
color gamut	% of NTSC % of PAL	40 55	at 20°C
response time	ms	28 max.	rising+falling
dimming		1:1000	
MTTH	hours	> 50 000	over full temp range

environmental			
temperature (operating)	°C	-31 to +85	acc. MIL-STD810
temperature (storage)	°C	-46 to +85	acc. MIL-STD810
cold start	°C	-31	without reducing the life time
shock (operating)	g; ms	50; 11	acc. MIL-STD810
vibration (operating)	g; Hz	3.5; 10-2000 Hz	acc. MIL-STD810



This flyer is only an overview of data.

All final data should be taken from the full specifications.

customized versions on request